

MODERN LITERARY  
ARCHIVES  
ARCHIFAU  
MODERN  
LLOYDYNETH

LGC  
NLW



Stondin Hughes a'i Fab, Eisteddfod Genedlaethol, 1 Awst 1953 (gch04843)  
Hughes and Son's stall, National Eisteddfod, 1 August 1953



## ARCHIFAU LLENYDDOL MODERN

### ARCHIFAU LLENYDDOL MODERN

Mae Llyfrgell Genedlaethol Cymru yn gartref i archifau rhai o feirdd a llenorion modern pwysigaf Cymru. Maent yn adnodd ymchwil gwerthfawr ar gyfer astudio llenyddiaeth a bywydau awduron yr 20fed ganrif a'r ganrif hon.

Ydych chi am:

- Wybod mwy am fardd, nofelydd neu ddramodydd?
- Weld drafft cyntaf o'ch hoff gerdd neu nofel?
- Ddarllen llythyr neu ddyddiadur gan eich hoff lenor?
- Ysgrifennu beirniadaeth lenyddol, adolygiad neu gofiant?
- Ddarllen sgriptiau radio a theledu'r BBC neu gyfansoddiadau'r Eisteddfod Genedlaethol

### LLENORION CYMRAEG

Mae'r Llyfrgell wedi casglu papurau a llawysgrifau beirdd, llenorion, dramodwyr, archdderwyddon, newyddiadurwyr ac ysgolheigion a ddaeth yn amlwg yn ystod yr 20fed ganrif.

Beth am weld copi drafft o nofel fwyaf poblogaidd yr 20fed ganrif – *Cysgod y Cryman* gan Islwyn Ffowc Elis, neu ddrafft o *Y Stafell Ddirgel* gan Marion Eames, a *Chyfras Rwdlan* gan Angharad Tomos?

## MODERN LITERARY ARCHIVES

### MODERN LITERARY ARCHIVES

The National Library of Wales is home to the archives of some of Wales' most important poets and authors. They are a valuable research resource for studying literature and the lives of 20th and 21st century authors.

Do you want to:

- Know more about a poet, novelist or playwright?
- See the first draft of your favourite poem or novel?
- Read a letter or diary by your favourite author?
- Write literary criticism, a review or biography?
- Read BBC radio and television scripts or National Eisteddfod compositions?

### ARCHIVES OF WELSH AUTHORS

The Library has collected papers and manuscripts belonging to poets, authors, playwrights, archdruids, journalists and scholars who became famous during the 20th century.

What about looking at a draft copy of the most popular Welsh novel written in the 20th century, *Cysgod y Cryman* by Islwyn Ffowc Elis, or a draft of *Y Stafell Ddirgel* by Marion Eames, and *Cyfras Rwdlan* by Angharad Tomos?

Why not read Saunders Lewis' letters to Kate Roberts, or the correspondence of Rhydwen

Beth am ddarllen llythyrau Saunders Lewis at Kate Roberts, neu lythyrau at Rhydwen Williams ac Alwyn D. Rees pan oeddynt yn golygu *Barn*? Beth am weld dyddiaduron Caradog Prichard neu Euros Bowen?

Ceir amrywiaeth eang o farddoniaeth, megis copi llawysgrif o *Caniadau Gwili*, copïau yn llaw R. Williams Parry o *Cerddi'r Gaeaf*, copi llawysgrif o awdl fuddugol *Y Mynach* gan Gwenallt, ac awdl *Y Mynydd* gan T. H. Parry-Williams.

Dyma restr o rai o'r awduron Cymraeg amlycaf yn ein casgliadau, ond nid yw popeth yn y rhestr hon a dylid chwilio'r catalogau am fanylion pellach. Gellir cael mynediad i'r archifau hynny sydd wedi eu catalogio drwy chwilio ar gatalogau arlein y Llyfrgell – <http://cat.llgc.org.uk> a <http://isys.llgc.org.uk>:

Williams and Alwyn D. Rees when they were editing *Barn*? Why not take a look at the diaries of Caradog Prichard or Euros Bowen?

There is a wide range of poetry, such as a manuscript copy of *Caniadau Gwili*, R. Williams Parry's handwritten copies of *Cerddi'r Gaeaf*, a manuscript copy of the victorious ode *Y Mynach* by Gwenallt, and the ode *Y Mynydd* by T. H. Parry-Williams.

Here are some authors who figure most prominently in our collections, but not everything is included here, and you should search the catalogues for further details. Access to those archives which have been catalogued is available by searching the Library's online catalogues – <http://cat.llgc.org.uk> and <http://isys.org.uk>:



Ishwyn Ffowc Elis, 1 Ebrill 1959 gan Geoff Charles. (gch20360.jpg)

Ambrose Bebb, Ben Bowen, David Bowen 'Myfyr Hefin', Euros Bowen, Aneirin Talfan Davies, David Thomas Davies, J. Glyn Davies, W. T. Pennar Davies, Marion Eames, Jane Edwards, O. M. Edwards, W. T. Edwards 'Gwilym Deudraeth', Islwyn Ffowc Elis, William Evans 'Wil Ifan', Richard Griffith 'Carneddog', W. J. Gruffydd, Beti Hughes, Mathonwy Hughes, E. Morgan Humphreys, Norah Isaac, David Emrys James 'Dewi Emrys', John Jenkins 'Gwili', Bobi Jones, David James Jones 'Gwenallt', Idwal Jones, T. Gwynn Jones, Alun T. Lewis, L. Haydn Lewis, Saunders Lewis, T. E. Nicholas 'Niclas y Glais', W. Rhys Nicholas, Dyddgu Owen, J. Dyfnallt Owen, Owen Griffith Owen 'Alafon', Robert Williams Parry, Winifred Parry 'Winnie Parry', Eigra Lewis Roberts, T. H. Parry-Williams, Iorwerth Peate, Caradog Prichard, Edgar Phillips 'Trefin', James Ednyfed Rhys 'Ap Nathan', W. Leslie Richards, Kate Roberts, Robert Roberts 'Silyn', Robert David Rowland 'Anthropos', Angharad Tomos, Harri Webb, D. J. Williams, Abergwaun; David John Williams, Llanbedr; John Ellis Williams, Rhydwen Williams, William Williams 'Crwys', Waldo Williams.

## LLENORION EINGL-GYMREIG

Ers dros 50 mlynedd mae'r Llyfrgell wedi mynd ati i gasglu papurau llenorion Cymreig (a elwid weithiau yn 'Eingl-Gymreig'), sef llenorion Cymreig sy'n ysgrifennu trwy gyfrwng yr iaith Saesneg. Y ffigwr amlycaf wrth gwrs yw Dylan Thomas ac mae gennym gasgliad cynyddol o lythyrau a llawysgrifau ganddo.

Mae gennym gasgliad o bapurau llenyddol Raymond Williams yn cynnwys drafftiau o'r nofelau *Border Country* a *People of the Black Mountains*.

Ambrose Bebb, Ben Bowen, David Bowen 'Myfyr Hefin', Euros Bowen, Aneirin Talfan Davies, David Thomas Davies, J. Glyn Davies, W. T. Pennar Davies, Marion Eames, Jane Edwards, O. M. Edwards, W. T. Edwards 'Gwilym Deudraeth', Islwyn Ffowc Elis, William Evans 'Wil Ifan', Richard Griffith 'Carneddog', W. J. Gruffydd, Beti Hughes, Mathonwy Hughes, E. Morgan Humphreys, Norah Isaac, David Emrys James 'Dewi Emrys', John Jenkins 'Gwili', Bobi Jones, David James Jones 'Gwenallt', Idwal Jones, T. Gwynn Jones, Alun T. Lewis, L. Haydn Lewis, Saunders Lewis, T. E. Nicholas 'Niclas y Glais', W. Rhys Nicholas, Dyddgu Owen, J. Dyfnallt Owen, Owen Griffith Owen 'Alafon', Robert Williams Parry, Winifred Parry 'Winnie Parry', Eigra Lewis Roberts, T. H. Parry-Williams, Iorwerth Peate, Caradog Prichard, Edgar Phillips 'Trefin', James Ednyfed Rhys 'Ap Nathan', W. Leslie Richards, Kate Roberts, Robert Roberts 'Silyn', Robert David Rowland 'Anthropos', Angharad Tomos, Harri Webb, D. J. Williams, Abergwaun; David John Williams, Llanbedr; John Ellis Williams, Rhydwen Williams, William Williams 'Crwys', Waldo Williams.

## ARCHIVES OF WELSH WRITERS IN ENGLISH

For over 50 years the Library has been collecting Welsh authors' papers (sometimes referred to as 'Anglo-Welsh'), that is Welsh authors who write through the medium of English. The most prominent figure of course is Dylan Thomas and we have an ever-increasing collection of his letters and manuscripts.

We have a collection of Raymond Williams' literary papers, including drafts of the novels

Ceir archif gynhwysfawr o bapurau'r awdur a'r artist David Jones yn cynnwys drafftiau o *In Parenthesis* a *The Anthemata*.

Hefyd mae gennym lyfrau nodiadau a phapurau Margiad Evans, drafftiau o nofelau a storiâu Rhys Davies ac archif gyflawn o nofelau, storiâu a llyfrau nodiadau yn llaw Gwyn Thomas.

Beth am weld dyddiaduron llenorion megis John Cowper Powys, Idris Davies neu Edward Thomas? Beth am weld llythyrau amrywiol at Keidrych Rhys, golygydd *Wales*, a llythyrau at Sam Adams yn trafod *Poetry Wales*?

*Border Country* and *People of the Black Mountains*. There is a comprehensive archive of papers of the author and artist David Jones, including drafts of *In Parenthesis* and *The Anthemata*.

We also have Margiad Evans' note books and papers, drafts of novels and stories by Rhys Davies, and a complete archive of novels, stories and note books in Gwyn Thomas' handwriting.

What about taking a look at the diaries of authors such as John Cowper Powys, Idris Davies or Edward Thomas? What about reading various letters to Keidrych Rhys, editor of *Wales*, or letters to Sam Adams discussing *Poetry Wales*?



Jack Jones, 1 Mehefin 1951 gan Geoff Charles (gch01815)

Dyma rai o'r awduron Eingl-Gymreig amlycaf yn ein casgliadau, ond nid yw popeth yn y rhestr hon a dylid chwilio'r catalogau am fanylion pellach. Gellir cael mynediad i'r archifau hynny sydd wedi eu catalogio drwy chwilio ar gatalogau arlein y Llyfrgell – <http://cat.llgc.org.uk> a <http://isys.llgc.org.uk>:

Dannie Abse, Sam Adams, Ron Berry, Alison Bielski, Gertrude Maud Carter, Brenda Chamberlain, Gillian Clarke, William Moreton Condry, Eliot Crawshay-Williams, Idris Davies, Rhys Davies, W. H. Davies, Tom Early, Caradoc Evans, Margiad Evans, Menna Gallie, Raymond Garlick, William Glynne-Jones, Geraint Goodwin, Llewelyn Wyn Griffith, Bryn Griffiths, James Hanley, Peter Hellings, Ray Howard-Jones, Cledwyn Hughes, Emyr Humphreys, David Jones, Glyn Jones, Gwyn Jones, Jack Jones, Alun Lewis, Richard Llewellyn, Tom Macdonald, Robert Morgan, Jan Morris, Roland Mathias, Oliver Onions, John Ormond, Daniel Parry-Jones, John Cowper Powys, A. G. Prys-Jones, Bernice Rubens, Berta Ruck, Dylan Thomas, Edward Thomas, Gwyn Thomas, R. S. Thomas, John Tripp, Vernon Watkins, Harri Webb, Emyr Williams, Gwyn Williams, Huw Menai Williams, Raymond Williams.

## SEFYDLIADAU LLENYDDOL, CYLCHGRONAU A CHYHOEDDWYR

Mae archifau llenyddol yn goroesi nid yn unig am fod y llenorion yn eu diogelu ond am eu bod yn rhan o archifau eu cyfeillion, eu golygyddion neu gyrff cyhoeddus a chyhoeddwyr.

Mae'r Eisteddfod Genedlaethol yn gorff pwysig yn nhraddodiad llenyddol Cymru ac mae Cyfansoddiadau a Beirniadaethau

Here are some authors who figure most prominently in our collections, but not everything is included here, and you should search the catalogues for further details. Access to the archives that have been catalogued is available by searching the Library's online catalogues – <http://cat.llgc.org.uk> and <http://isys.llgc.org.uk>:

Dannie Abse, Sam Adams, Ron Berry, Alison Bielski, Gertrude Maud Carter, Brenda Chamberlain, Gillian Clarke, William Moreton Condry, Eliot Crawshay-Williams, Idris Davies, Rhys Davies, W. H. Davies, Tom Early, Caradoc Evans, Margiad Evans, Menna Gallie, Raymond Garlick, William Glynne-Jones, Geraint Goodwin, Llewelyn Wyn Griffith, Bryn Griffiths, James Hanley, Peter Hellings, Ray Howard-Jones, Cledwyn Hughes, Emyr Humphreys, David Jones, Glyn Jones, Gwyn Jones, Jack Jones, Alun Lewis, Richard Llewellyn, Tom Macdonald, Robert Morgan, Jan Morris, Roland Mathias, Oliver Onions, John Ormond, Daniel Parry-Jones, John Cowper Powys, A. G. Prys-Jones, Bernice Rubens, Berta Ruck, Dylan Thomas, Edward Thomas, Gwyn Thomas, R. S. Thomas, John Tripp, Vernon Watkins, Harri Webb, Emyr Williams, Gwyn Williams, Huw Menai Williams, Raymond Williams.

## ARCHIVES OF LITERARY ORGANISATIONS, JOURNALS AND PUBLISHERS

Modern literary archives have survived not only because the authors have safeguarded them, but because they form a part of the archives of their friends, editors or public bodies and publishers.



Eisteddfodol o 1886 ymlaen yn y Llyfrgell. Mae gennym bapurau Cyngor Celfyddydau Cymru ers ei sefydlu yn 1967 sy'n cynnwys casgliad pwysig o archifau llenorion Cymreig. Mae archif enfawr BBC Cymru yn cynnwys sgrïptiau dramâu megis sgrïpt gyntaf 'Pobl y Cwm', a sgysiau gan awduron amlwg o 1932 ymlaen.

Ceir hefyd archifau nifer o gyhoeddwy'r chylchgronau llenyddol.

Dyma restr o rai o'r archifau amlycaf yn ein casgliadau, ond nid yw popeth yn y rhestr hon a dylid chwilio'r catalogau am fanylion pellach. Gellir cael mynediad i'r archifau hynny sydd wedi eu catalogio drwy chwilio ar gatalogau arlein y Llyfrgell – <http://cat.llgc.org.uk> a <http://isys.llgc.org.uk>:

Anglo-Welsh Review, Sgrïptiau BBC Cymru / Wales Scripts, Bwrdd Ffilmiau Cymraeg, Canolfan Llenyddiaeth Plant Cymru, Cymdeithas Lyfrau Ceredigion, Cyngor Celfyddydau Cymru / Welsh Arts Council, Cwmni Theatr Hwyl a Fflag, Dock Leaves, Eisteddfod Genedlaethol Cymru – Cofnodion y Swyddfa Ganolog, Eisteddfod Genedlaethol Cymru – Cyfansoddiadau a Beirniadaethau, Gwasg Gee, Gwasg Gregynog, Hughes a'i Fab, Wrecsam, Made in Wales Stage Company, Planet, Poetry Wales, Theatr Garthewin, Wales (Keidrych Rhys), Y Faner, Y Gymdeithas Gerdd Dafod a Barddas, Y Llenor, Yr Academi Gymreig / Welsh Academy.

The National Eisteddfod is an important body in Wales' literary tradition and the Library has Eisteddfod compositions and adjudications from 1886 onwards.

We have papers of the Welsh Arts Council from its foundation in 1967 including an important collection of Welsh authors' archives. BBC Wales' enormous archive includes drama scripts such as the first ever script for 'Pobl y Cwm', and talks by prominent authors from 1932 onwards. There are also archives of a number of publishers and literary journals.

Here are some archives that figure prominently in our collections, but not everything is included here, and you should search the catalogues for further details. Access to those archives that have been catalogued is available by searching the Library's online catalogues – <http://cat.llgc.org.uk> and <http://isys.llgc.org.uk>:

Anglo-Welsh Review, Sgrïptiau BBC Cymru / Wales Scripts, Bwrdd Ffilmiau Cymraeg, Canolfan Llenyddiaeth Plant Cymru, Cymdeithas Lyfrau Ceredigion, Cyngor Celfyddydau Cymru / Welsh Arts Council, Cwmni Theatr Hwyl a Fflag, Dock Leaves, Eisteddfod Genedlaethol Cymru – Cofnodion y Swyddfa Ganolog, Eisteddfod Genedlaethol Cymru – Cyfansoddiadau a Beirniadaethau, Gwasg Gee, Gwasg Gregynog, Hughes a'i Fab, Wrecsam, Made in Wales Stage Company, Planet, Poetry Wales, Theatr Garthewin, Wales (Keidrych Rhys), Y Faner, Y Gymdeithas Gerdd Dafod a Barddas, Y Llenor, Yr Academi Gymreig / Welsh Academy.



Yr Archdderwydd, 6 Awst 1956, The Archdruid, 6 August 1956 gan Geoff Charles (gch16323)



## BETH SYDD MEWN ARCHIF LENYDDOL?

Mae pob archif yn unigryw – gall amrywio o archif gynhwysfawr i lawysgrifau unigol. Yn aml fe geir drafftiau o weithiau, gohebiaeth, a phapurau personol.

Efallai fod un llenor wedi cadw llyfrau nodiadau, drafftiau llawysgrif, drafftiau teipysgrif, proflenni, ac adolygiadau yn y wasg tra bo un arall heb gadw unrhyw ddrafftiau o'i weithiau.

Mae'r un peth yn wir am ohebiaeth – weithiau ceir ffeiliau cyflawn o ohebiaeth bersonol a phroffesiynol, ond dro arall nifer bychan o lythyrau sydd wedi goroesi.

Mae papurau personol yn medru taflu goleuni ar yr awdur a'i waith, ac yn achlysurol ceir dyddiaduron, ffotograffau, a phapurau teuluol. Weithiau nid oes gennym gasgliad o bapurau'r llenor ei hun, ond mae llythyrau neu lawysgrifau yn goroesi ymysg papurau pobl eraill.

## DEFNYDDIO ARCHIFAU LLENYDDOL

Mae drafftiau yn medru dangos y broses greadigol, datblygiad y testun, newidiadau mewn steil a strwythur ac yn medru helpu i ddyddio'r gwaith.

Gall gohebiaeth daflu goleuni ar fywyd a syniadau'r awduron, eu cylch o ffrindiau a'r dylanwadau a fu arnynt.

Gall papurau personol gynnwys gwybodaeth bwysig i fywgraffyddion, golygyddion, haneswyr cymdeithasol, myfyrwyr sy'n astudio llenyddiaeth, neu edmygwyr selog.

## WHAT IS INCLUDED IN A LITERARY ARCHIVE?

Every archive is unique – it can vary from a comprehensive archive to individual manuscripts. Often there are drafts of works, correspondence and personal papers.

One author may have kept a notebook, manuscript drafts, typescript drafts, proofs, and reviews in the papers whilst another may not have kept any drafts of his work.

The same is true of correspondence – sometimes there are whole files of personal and professional correspondence, but in other cases only a small number of letters will have survived.

Personal papers can shed light on an author and his works, and occasionally there will be diaries, photographs and family papers. Sometimes we will not have a collection of papers belonging to the author, but there might be letters or manuscripts that have survived amongst other people's papers.

## USING LITERARY ARCHIVES

Drafts can demonstrate how the creative process works, can illustrate the development of the text and changes in style and structure, and can help to date the work.

Correspondence can shed light on authors' lives and ideas, their circle of friends and the influences on them.

Personal papers can include important information for biographers, editors, social historians, students who study literature, and fans.

## PROSIECT ARCHIF LLENYDDIAETH CYMRU

Bydd archifau llenyddol y dyfodol yn cynnwys dogfennau cyfrifiadurol, negeseuon e-bost, tudalennau o'r we ac ati, yn ogystal â phapurau a llyfrau. Mae newidiadau cyflym technoleg yn cynnig amryfai ddeusiadau a phrofiadau i ni yn ein bywyd beunyddiol, ond mae'r sefyllfa hon hefyd yn creu her arbennig wrth feddwl am ddiogelu ein treftadaeth ddiwylliannol. Am fwy o fanylion ewch i [www.llgc.org.uk/cof](http://www.llgc.org.uk/cof).

## DAVID JONES, BERTA RUCK A W. H. DAVIES

Mae tair o archifau pwysicaf y casgliad wedi cael sylw arbennig ar wefan y Llyfrgell, sef papurau David Jones, archifau Berta Ruck a llawysgrifau W. H. Davies. Ceir manylion sut y trefnir y casgliad, sut i'w chwilio ac unrhyw oblygiadau cael mynediad at y casgliadau a chael hawl i gopïo. Mae modd gweld y tudalennau hyn trwy ymweld â [www.llgc.org.uk/archifaumodern](http://www.llgc.org.uk/archifaumodern).

## DRYCH DIGIDOL

Mae aml i eitem wedi cael ei digido ac ar gael ar wefan y Llyfrgell. Mae'r rhain yn cynnwys Cofnodion Ystad Wynnstay 'Ystrad Marchell', Gwrachyddiaeth yn sir y Fflint yn yr ail ganrif ar bymtheg, Notitiae Llanellwly, Llyfr Festri plwyf Llanbedr Pont Steffan, Collectanea Menevensia, Yr Anthem Gendlaethol – Mae Hen Wlad fy Nhadau, a dyddiaduron a llythyron Lloyd George. Ceir cefndir i'r eitemau yn ogystal â mynediad i ddelweddau digidol o eitemau unigol trwy ymweld â [www.llgc.org.uk/drychdigidol](http://www.llgc.org.uk/drychdigidol).

## THE WELSH LITERATURE ARCHIVE PROJECT

The literary archives of the future are likely to contain computer documents, e-mail messages, web pages and so forth, as well as papers and books. Rapidly changing technology offers us multiple options, tools and experiences in everyday life, but this situation also presents a serious challenge as we think about safeguarding our cultural heritage. For more information, visit [www.llgc.org.uk/memory](http://www.llgc.org.uk/memory).

## DAVID JONES, BERTA RUCK AND W. H. DAVIES

Three of the most important archives in the collections have received special attention on the Library's website; they are the David Jones papers, the Berta Ruck archives and the W. H. Davies manuscripts. You will find details of how the collections are organised, how to search for information in them, and any viewing restrictions and copyright implications. You can view these pages at [www.llgc.org.uk/modernarchives](http://www.llgc.org.uk/modernarchives).

## DIGITAL MIRROR

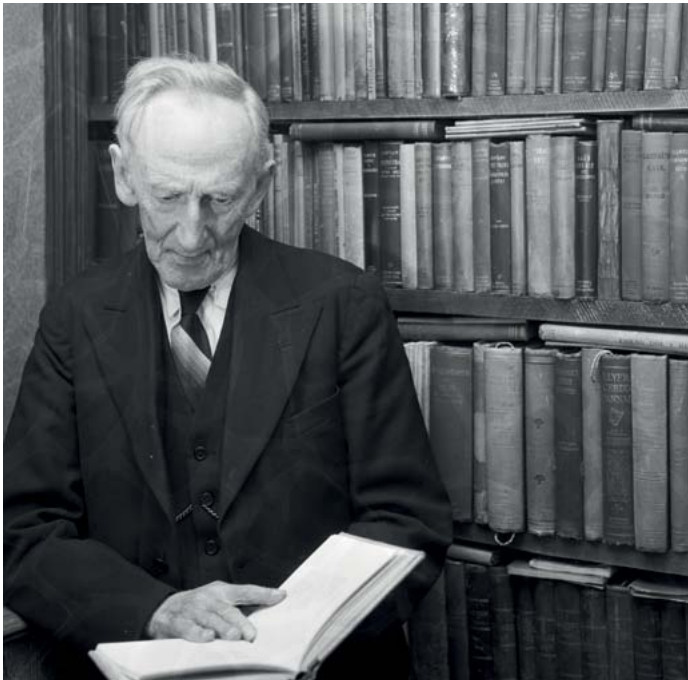
A few items have been digitized and are available on the Library's webpage. These include Wynnstay Estate Records 'Strata Marcella', Witchcraft in the Court of Great Sessions Records, St Asaph Notitiae, the Lampeter Vestry Book, Collectanea Menevensia, The National Anthem – Mae Hen Wlad fy Nhadau and Lloyd George's diaries and letters. Background information and access to digital images of the items are available at [www.llgc.org.uk/digitalmirror](http://www.llgc.org.uk/digitalmirror).

## DEFNYDDIO'R CASGLIAD

Nid oes angen rhybudd o flaen llaw cyn dod i ddefnyddio'r Ystafell Ddarllen, ond os oes gennych wybodaeth am eitem neu gasgliad arbennig yr ydych am ei weld, awgrymir eich bod yn gwneud cais trwy brif gatalog y Llyfrgell – <http://cat.llgc.org.uk>, neu os ydych am dderbyn cymorth, mae croeso i chi gysylltu â'r tîm ymholiadau trwy lenwi ein ffurflen ymholiadau ar-lein – [www.llgc.org.uk/holi](http://www.llgc.org.uk/holi). Noder os gwelwch yn dda, os ydych am dderbyn copïau o eitemau allan o'r casgliadau, y bydd rhaid cydymffurfio â deddfau hawlfraint wrth atgynhyrchu.

## USING THE COLLECTION

There is no need to give notice before using the Reading Room, but if you have information about a specific item or collection that you wish to look at, we recommend that you place a request via the Library's main catalogue – <http://cat.llgc.org.uk>, or if you need assistance, you are welcome to contact the Enquiries Team by completing our online enquiry form – [www.llgc.org.uk/enquire](http://www.llgc.org.uk/enquire). Please note that if you wish to receive copies of items from the collections, you are required to comply with copyright legislation when reproducing material.



Evan Roberts, Llandderfel yn ei lyfrgell, 29 Mai 1958, gan Geoff Charles (gchi13480)  
Evan Roberts in his library, 29 May 1958

[www.llgc.org.uk](http://www.llgc.org.uk)  
[gofyn@llgc.org.uk](mailto:gofyn@llgc.org.uk)  
[enquiry@llgc.org.uk](mailto:enquiry@llgc.org.uk)  
t: 01970 632800